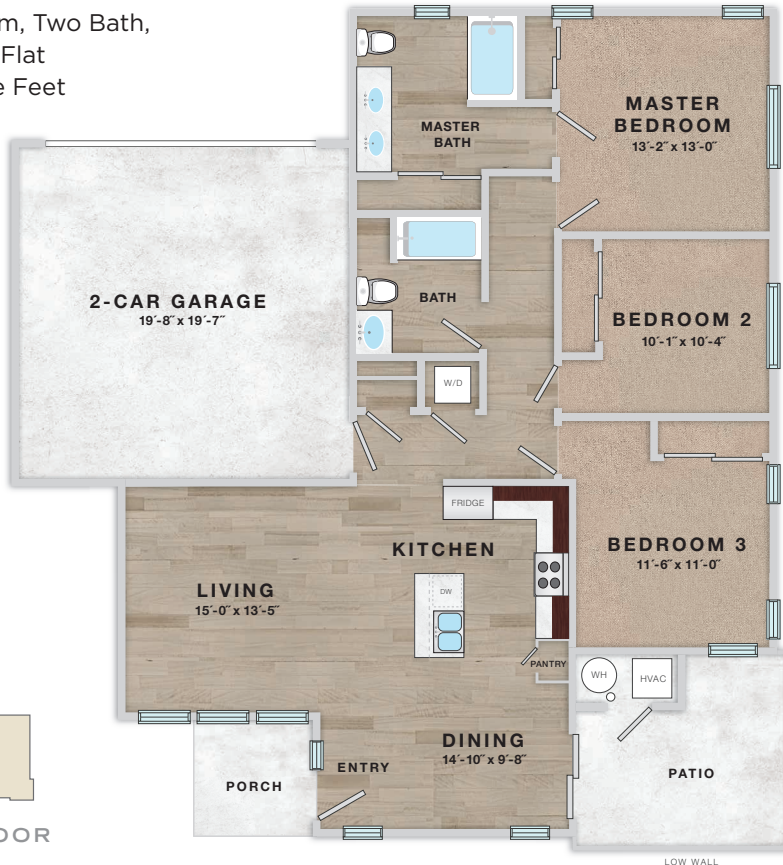


Centennial

Three Bedroom, Two Bath,
Ground Floor Flat
- 1,320 Square Feet



Attached, Direct-Access
Two-Car Garage

Private Front Entry

Nine-Foot Ceilings
with Ceiling Fans

Open Concept Kitchen with
Island, Quartz Counters and
Tile Backsplash

Stainless Steel Appliances

Master Bedroom En Suite
with Double Vanity

In-Unit Laundry

Hardwood Style Floors

Designer Treatments
on all Windows

Central Heat and Air

Private Porch and Patio


Enclave
VISTA RIDGE

303-834-9813 enclavevistaridge.com