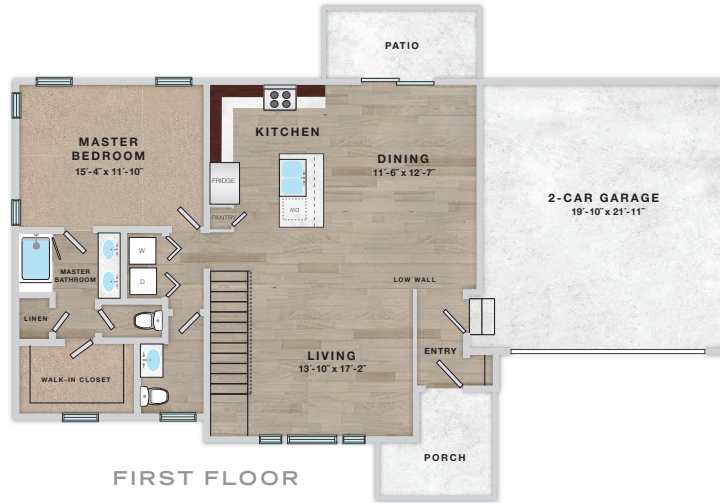
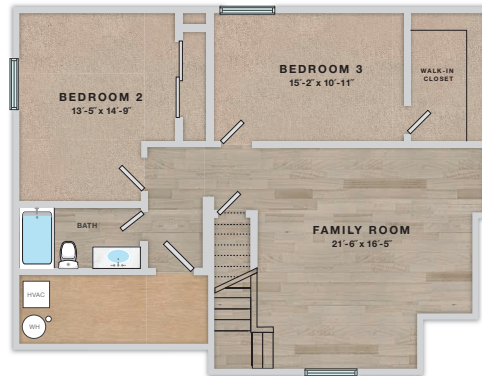


## Muirfield

Three Bedroom,  
Two and a Half Bath,  
Single Family  
Detached Home  
with Family Room  
- 1,971 Square Feet



FIRST FLOOR



BASEMENT

Great Open Floor Plan

Attached Direct Access 2-Car Garage

Front Porch and Rear Patio

Finished Basement

Separate Family Room

Ceiling Fans

Nine-foot Ceilings throughout,  
Including Basement

Open Concept Kitchen with Island,  
Quartz Counters, and Tile Backsplash

Stainless Steel Appliances

Master Bedroom En Suite  
with Double Vanity

In-Unit Side by Side Laundry

Hardwood Style Floors

Designer Window Treatments

Central Heat and Air Conditioning

  
**Enclave**  
VISTA RIDGE

303-834-9813 [enclavevistaridge.com](http://enclavevistaridge.com)